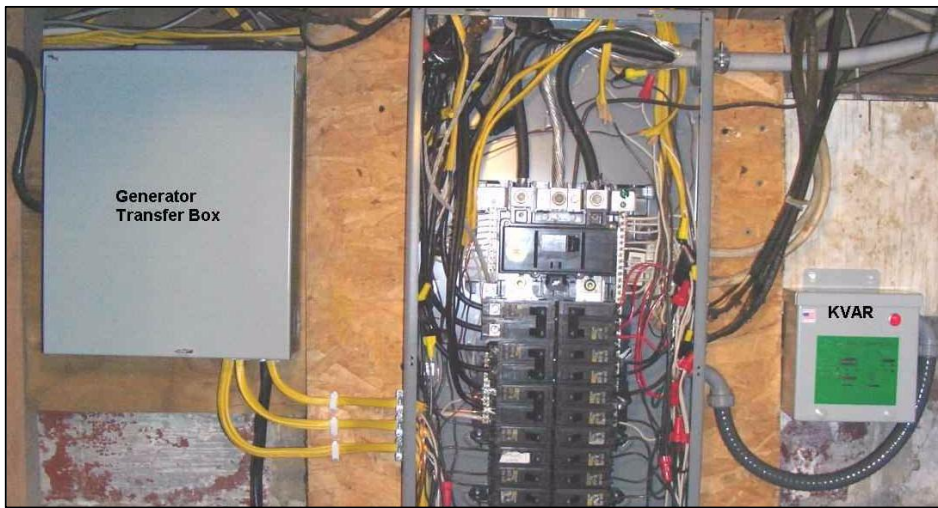


PU1200 KVAR Energy Controller

This has been my experience with the PU1200 KVAR Energy Controller.

I had read –pro and con – about the unit, and about ‘knock-offs’, touting similar saving potential. While the knock-offs are cheaper, I opted to go with the original, since it had a good ‘if not satisfied’ policy. After it’s installed, you have a couple months to decide whether to keep it or send it back for a full refund...

When the KVAR’s little red light came on, I knew it was wired correctly. The unit is a well-built box painted to blend with the electric panel color. The KVAR makes a little humming noise, which I understood would be the case. But you really have to listen closely in order to hear it.



The photo shows the KVAR unit mounted on the right of the control panel. KVAR makes both a left-mount and a right-mount unit. I really needed a left-mount unit, but this was the last one available. And as you can see, there wasn’t any room on the other side of the panel because of another box taking up so much room.

After installation, all I had to do was wait a month and compare electric usage figures to the same month last year. I’ve done that now for 2 months and below is the spreadsheet showing the difference between July and August of last year (08) and the same 2 months this year (09).

	A	B	C	D	E	F	G	H	I	J
1	New Lexington, OH 43764				Installed	4-Jun-09				
2										
3	Meter Readings									
4				Billing	Avg Daily	Avg Daily	KVAR		Cost	% Inc.
5	Date	Meter	KWH Used	Days	KWH	KWH Diff.	% less	\$/Billed	\$/KWH	\$/KWH
6	6/6/2008	49542	0	0	0					
7	7/8/2008	51580	2038	32	63.69			\$155.51	\$0.076	
8	8/3/2008	53649	2069	26	79.58			\$157.68	\$0.076	
9	6/8/2009	65154	0	0	0					
10	7/7/2009	66635	1481	29	51.07	12.62	19.81%	\$132.00	\$0.089	16.8%
11	8/6/2009	68294	1659	30	55.30	24.28	30.51%	\$142.63	\$0.086	12.8%

I know that variables affect any potential savings. Vacation, weather, changes and configuration of electrical fixtures or appliances, all must be taken into

consideration. Even the number of billing days has a bearing on any savings. So the figures in column G are obviously not totally accurate. But to the best of my recollection, the two months being compared are compatible insofar as any variables are concerned.

I am pleased with the unit and the sales representative that sold it to me. I would recommend KVAR to anyone wanting to save a little more on energy cost besides normal weatherizing, more efficient appliances, and possible changes in life style. And why take a chance on a cheaper ‘knock-off’?